
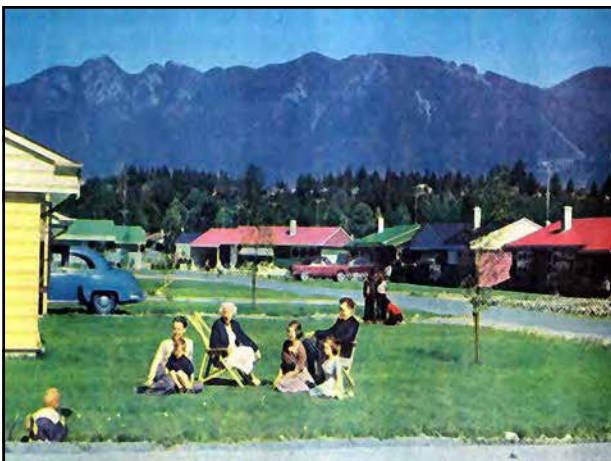
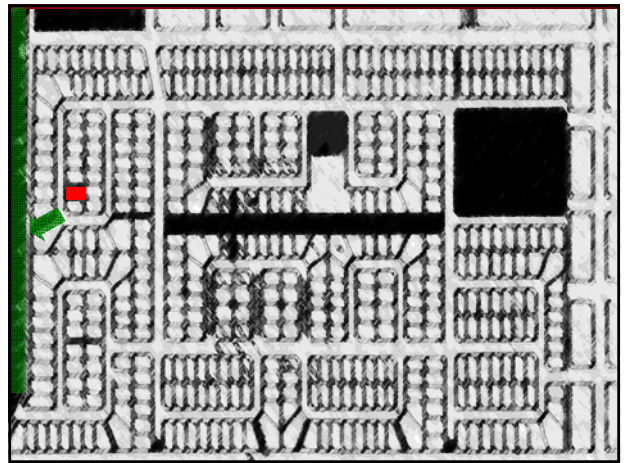
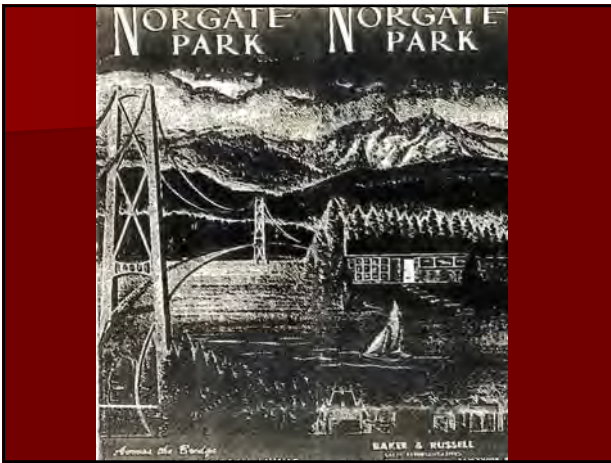
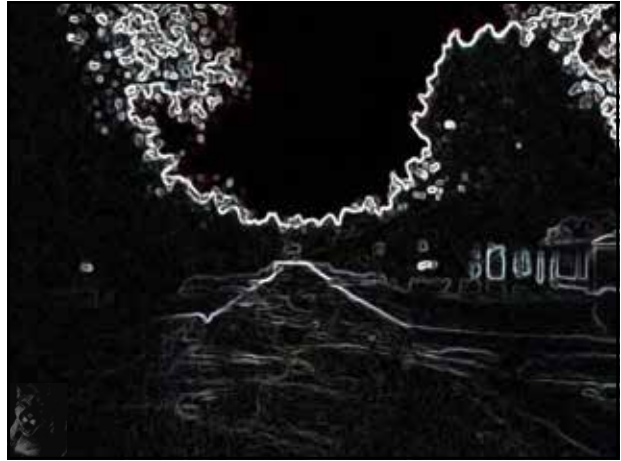
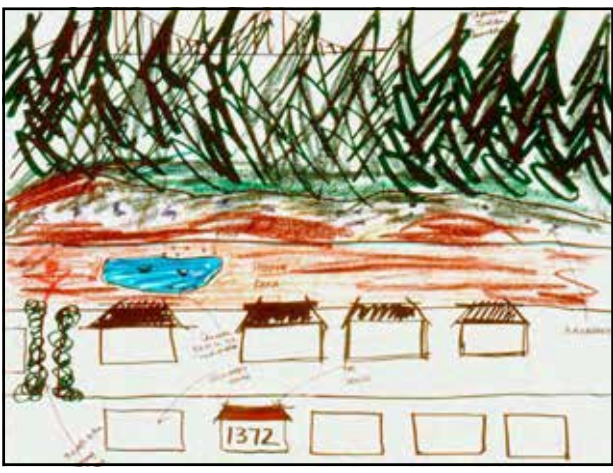
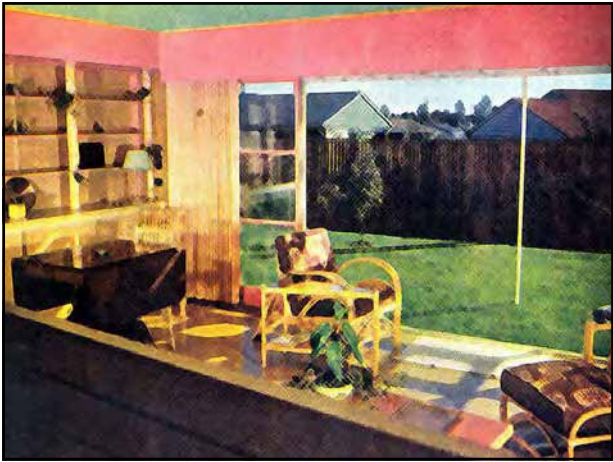
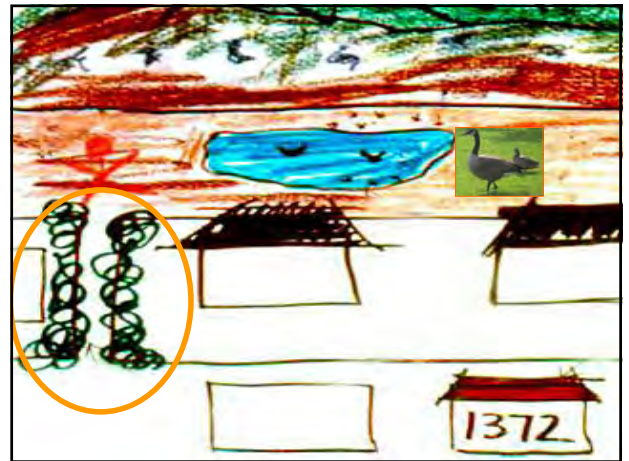
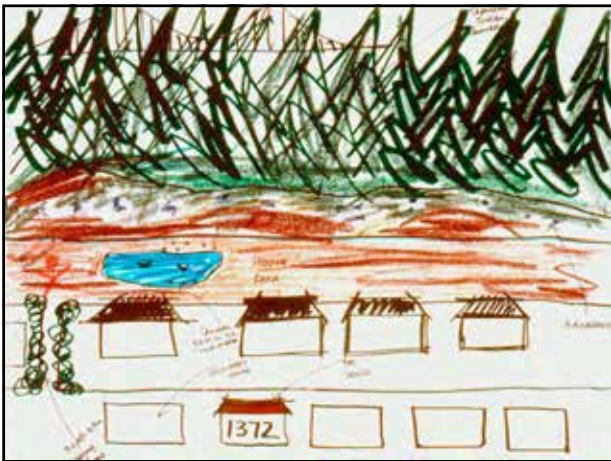


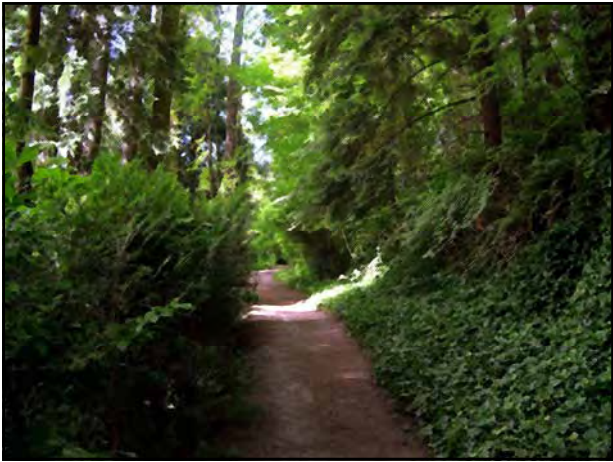
The Child in the Wild
Children Knowing/Loving/Protecting Nature:
By Wendy Sarkissian
with Charlotte Humphries

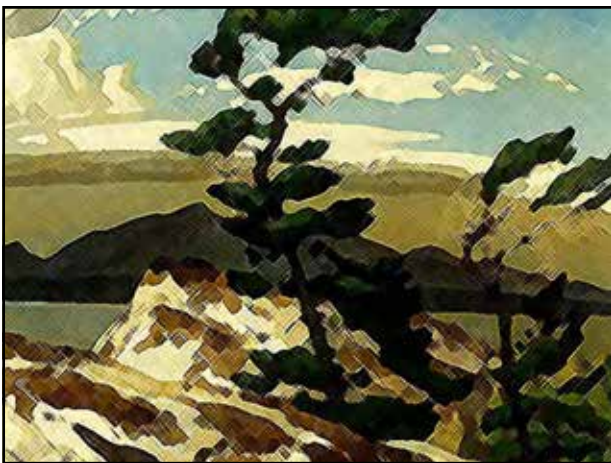


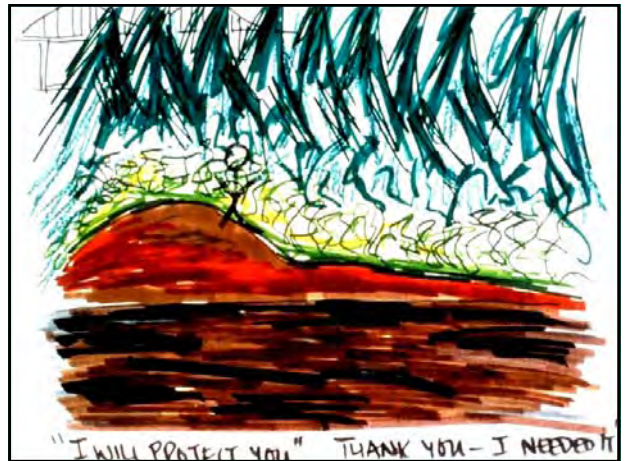
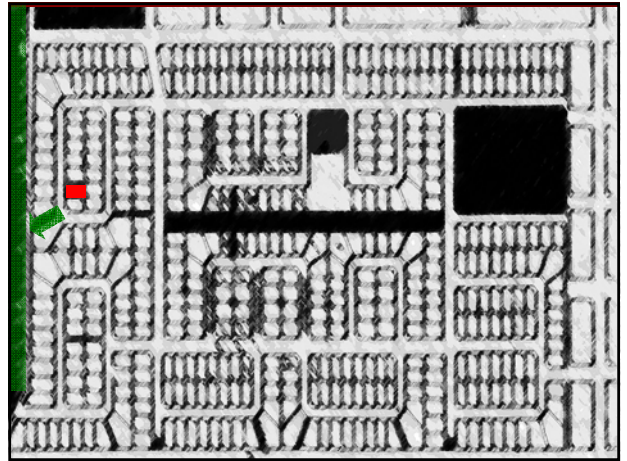




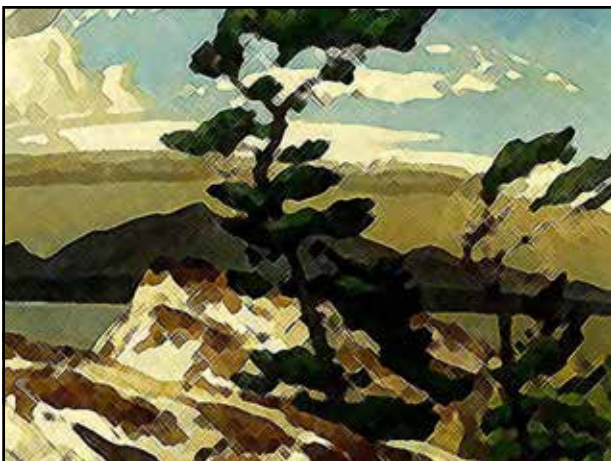
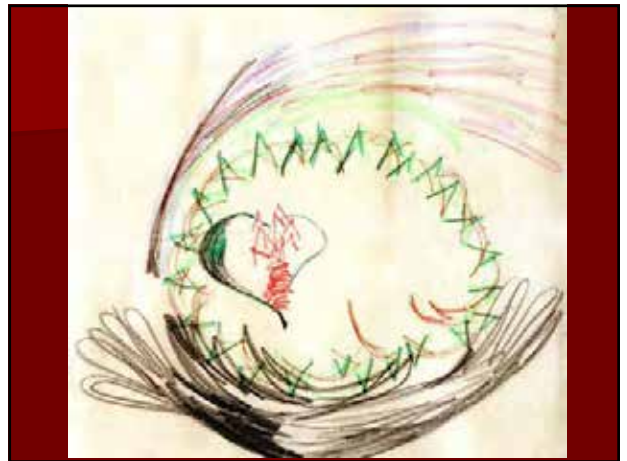
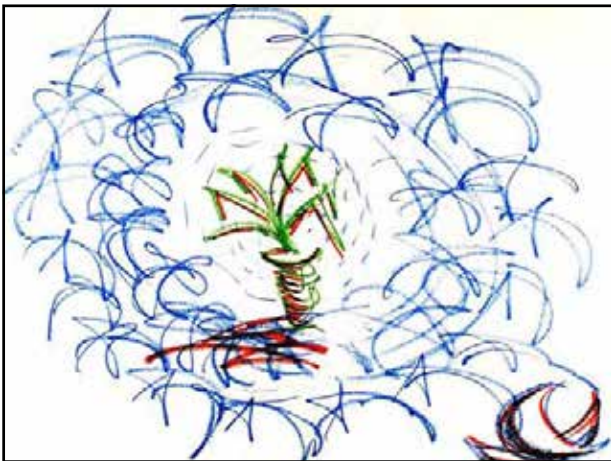


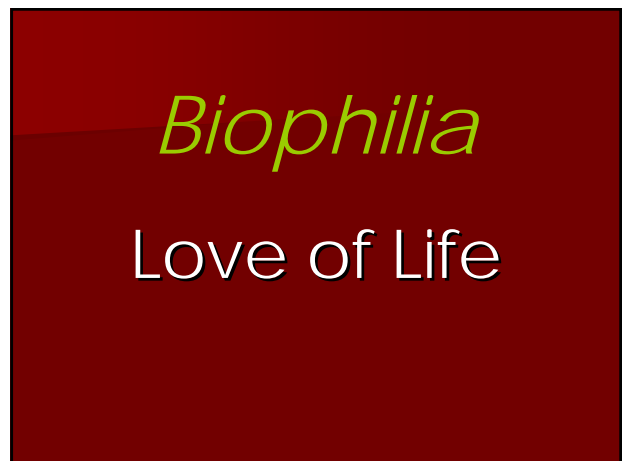
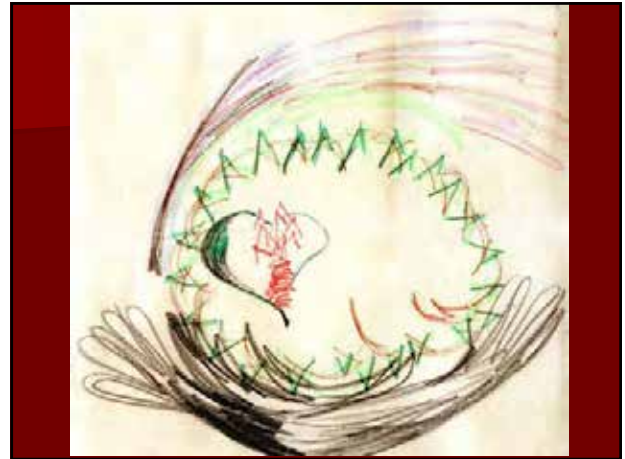








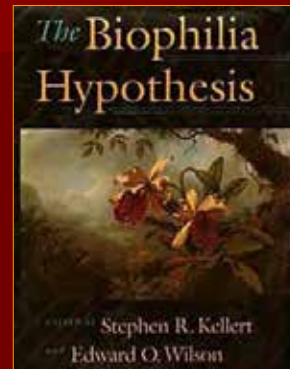




Biophilia



Biophilia: love of life



Why Nature?

Preference: "an expression of underlying human need"



Von Bredow 2006

Children



Childhood Remembered

Memories of favoured childhood places are most often

Parks

Hiding spots

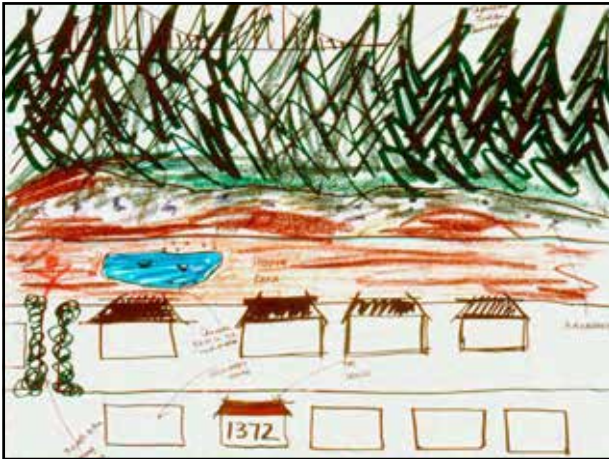
"Leftover spaces"

Wild and untamed



What Children Remember

- one study of adult memories: 95% remembered outdoor experiences of childhood more vividly and fondly than other experiences
- Clare Cooper Marcus (1978) survey of university students' memories of favourite childhood places:
 - 86% of environments recalled were outdoors



Outdoors

most significant setting
for children's unstructured play
and everyday activities



Creativity and extent of play influenced
by:

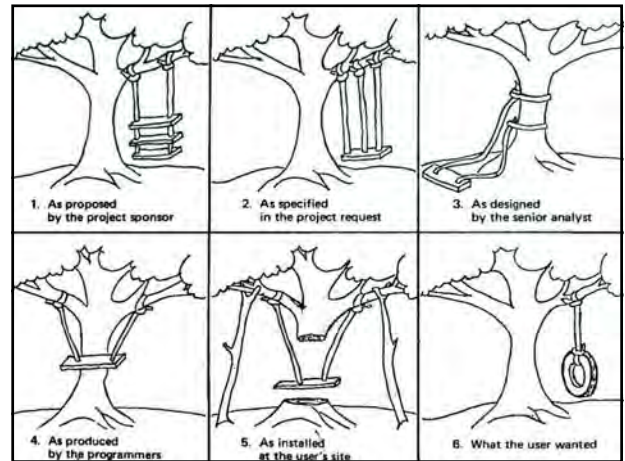
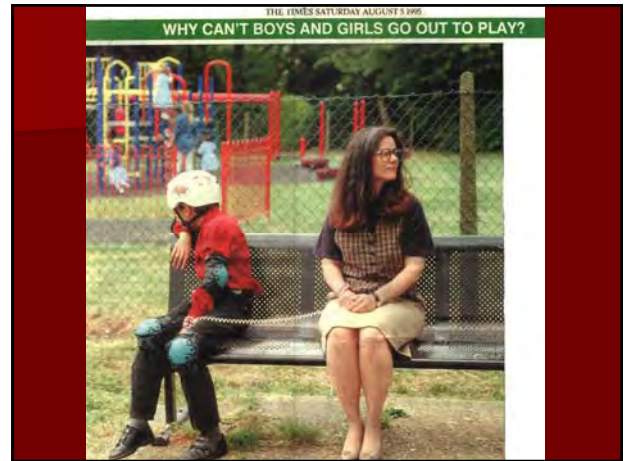
- Equipment
- Materials
- Design of landscape
- Amount of vegetation,
particularly **TREES**



Play

Risk sweetens everything?





Designing for Play

Play:
significant shaper of adult intelligence, values and self-sufficiency

"The work of childhood"

80 percent of a child's learning occurs before age 8

Why is play important?

Children's way to..

- discover their social and natural environments
- be introduced to a world beyond their families
- learn to function on their own
- build feelings of self-confidence and self-esteem



A Good Play Space

Should -- or could -- be
a good **public** space

...

and vice versa



Play diversity and natural play



Multiple Levels of Activities

Who chose these play sculptures?


 A child in a white t-shirt and dark shorts is seen from behind, interacting with a play sculpture that features a red circular element. To the right, a separate sculpture of a yellow, multi-headed creature is shown on a grassy area.




What's so special about this playground?

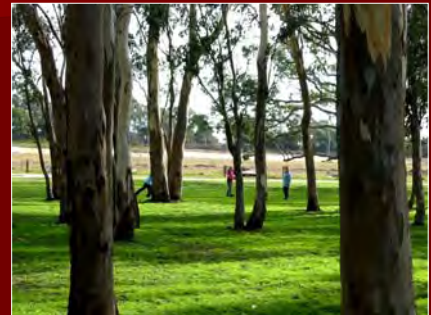


Hard and soft play surfaces



Natural Play

helps children build, develop & learn through doing



Whose Play Space?







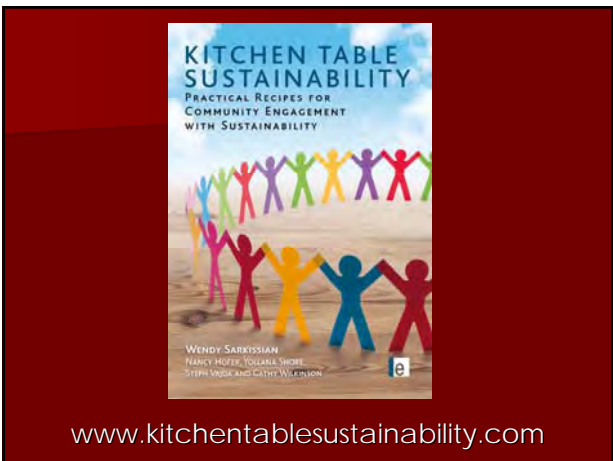
Malleable materials?



Space for both children and adults



Trees



www.kitchentablesustainability.com



Nurturing



Trust

